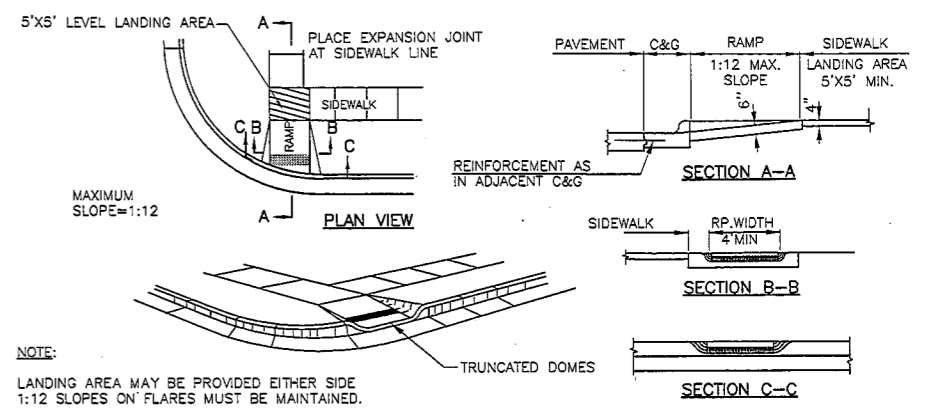
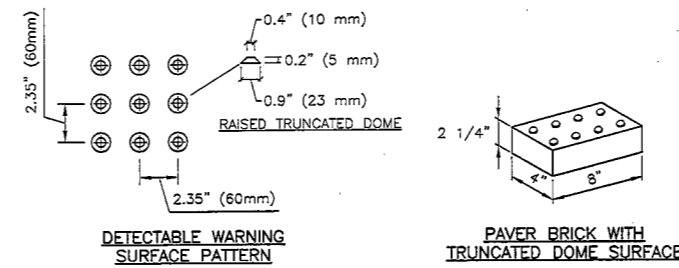


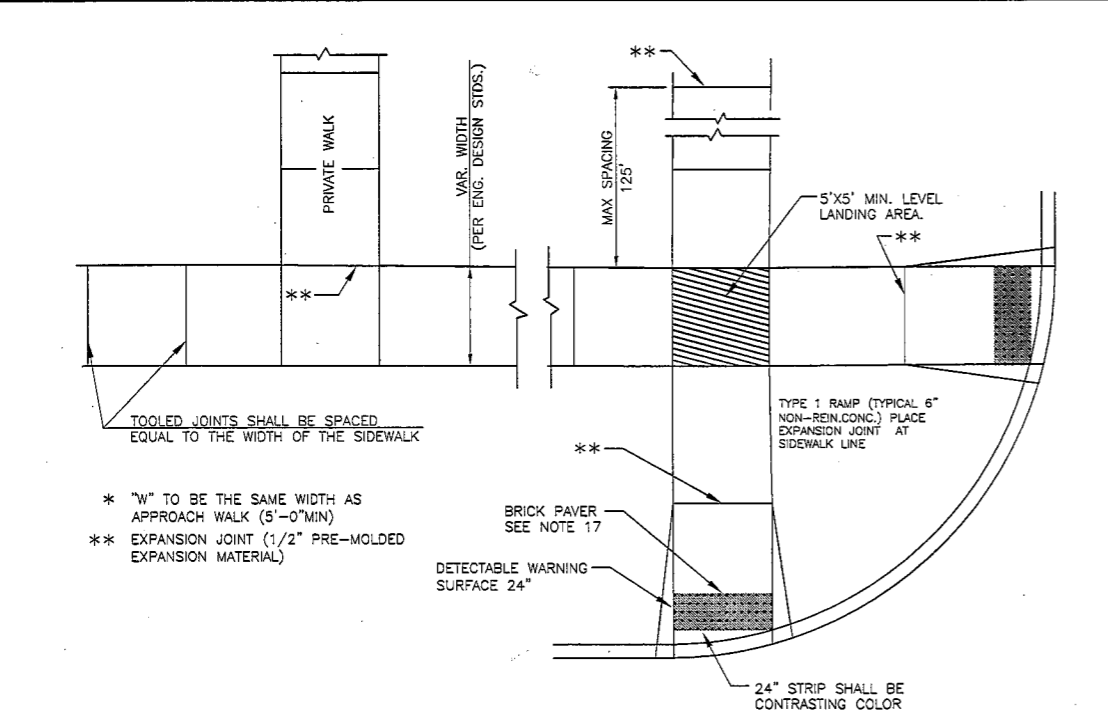
GENERAL NOTES:

1. DETAILS SHOWN ON THIS PLAN APPLY TO ALL CONSTRUCTION OR RECONSTRUCTION OF STREETS, CURBS OR SIDEWALKS.
2. CURB CUT RAMPS ARE TO BE LOCATED AS SHOWN ON THE PLANS OR AS DIRECTED BY THE CITY ENGINEER.
3. RAMPS SHALL BE PROVIDED AT ALL CORNERS OF STREET INTERSECTIONS WHERE THERE IS EXISTING OR PROPOSED SIDEWALK AND CURB.
4. SURFACE TEXTURE OF THE RAMP SHALL CONSIST OF RAISED TRUNCATED DOME WITH A DIAMETER OF NOMINAL 0.9 in, A HEIGHT OF NOMINAL 0.2in AND A CENTER-TO-CENTER SPACING OF NOMINAL 2.35in.
5. SIDEWALKS SHALL BE RAMPED WHERE THE DRIVEWAY CURB IS EXTENDED ACROSS THE WALK.
6. CARE SHALL BE TAKEN TO ASSURE A UNIFORM GRADE ON THE RAMP, FREE OF SAGS AND SHORT GRADE CHANGES.
7. IF POSSIBLE, DRAINAGE STRUCTURES SHOULD NOT BE PLACED IN LINE WITH THE RAMP, EXCEPT WHERE EXISTING DRAINAGE STRUCTURES ARE BEING UTILIZED IN THE NEW CONSTRUCTION.
8. THE LOCATION OF THE RAMP SHOULD TAKE PRECEDENCE OVER THE LOCATION OF DRAINAGE STRUCTURES.
9. USE OF SIDEWALK RAMP TYPE 2 SHALL BE RESTRICTED TO LOCATIONS WHERE IT IS NOT FEASIBLE TO USE TYPE 1 OR TYPE 3 RAMPS.
10. THE NORMAL GUTTER LINE PROFILE SHALL BE MAINTAINED THROUGH THE AREA OF THE RAMP.
11. SIDEWALK RAMPS THAT ARE CONSTRUCTED WITHIN THE ENDS OF THE CURB RETURNS AT INTERSECTIONS SHALL BE CONSTRUCTED OF 6" NON-REINFORCED CONCRETE.
12. IN FLUSH RUNS, EXPANSION JOINTS SHALL BE 1/2" PRE-MOLDED EXPANSION MATERIAL, FLUSH WITH THE SURFACE AND AT A MAXIMUM SPACING OF 125'.
13. THIS SAME JOINT SHALL BE USED AT SIDEWALK JUNCTIONS AS SHOWN IN TYPICAL PLAN.
14. WHERE THE SIDEWALK IS PARALLEL AND ADJACENT TO A RIGID STRUCTURE, A 1/2" PRE-MOLDED EXPANSION MATERIAL FLUSH WITH THE SURFACE SHALL BE USED.
15. SIDEWALKS SHALL SLOPE TO MATCH EXISTING DRAINAGE PATTERNS. THE RATE OF CROSS-SLOPE IS 1:50 MAX.
16. WHERE SIDEWALK IS SHOWN TO BE CONSTRUCTED THROUGH AN ENTRANCE, IT SHALL BE 6" THICK AND MAINTAIN 1:50 CROSS-SLOPE.
17. ADA TRUNCATED DETECTABLE DOME AT SIDEWALK RAMPS SHALL BE A MANUFACTURED BRICK PAVER. INSTALL PER MANUFACTURER'S RECOMMENDATIONS. COLOR SHALL BE APPROVED BY THE CITY ENGINEER.

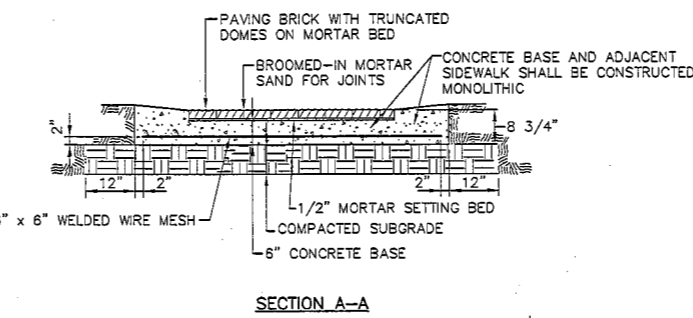


NOTE:
LANDING AREA MAY BE PROVIDED EITHER SIDE
1:12 SLOPES ON FLARES MUST BE MAINTAINED.

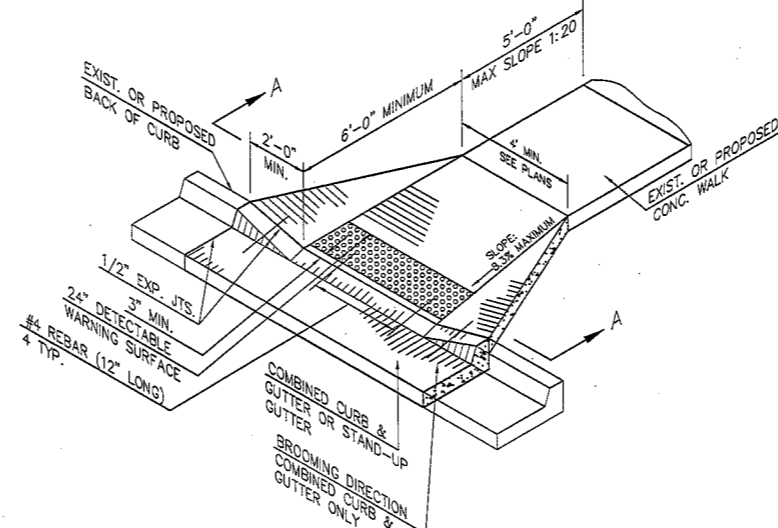
SIDEWALK RAMP TYPE 1
N.T.S.



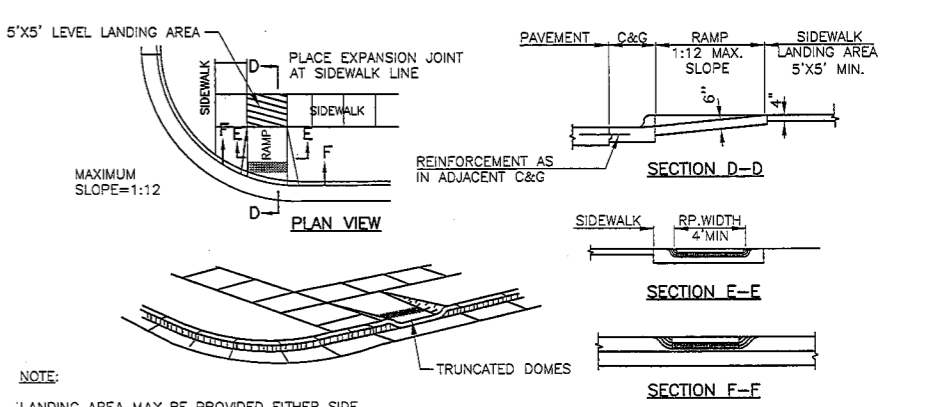
TYPICAL PLAN
N.T.S.



SECTION A-A

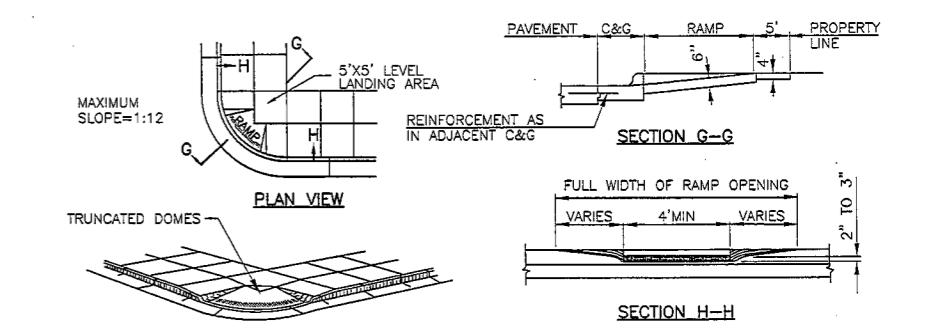


ISOMETRIC OF RAMP WITH PERPENDICULAR WALK
SIDEWALK RAMP
N.T.S.



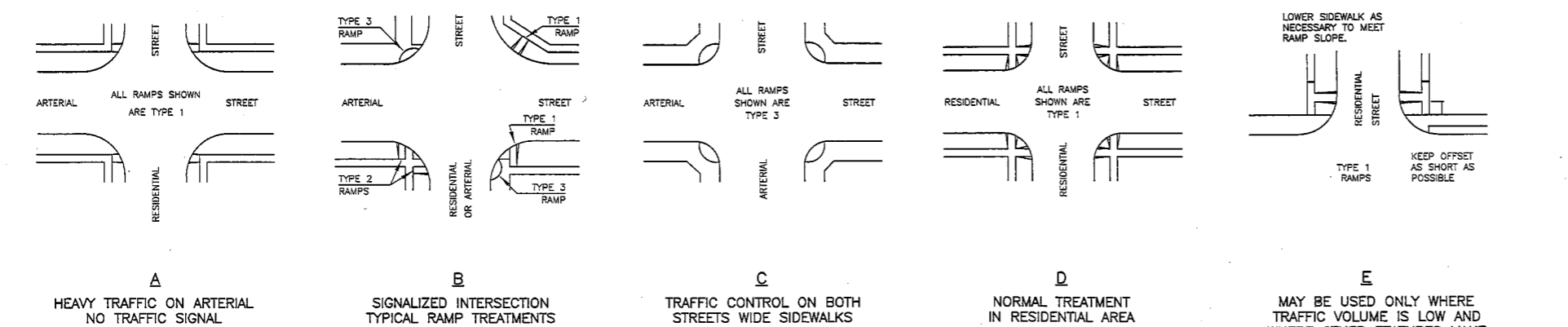
NOTE:
LANDING AREA MAY BE PROVIDED EITHER SIDE
1:12 SLOPES ON FLARES MUST BE MAINTAINED.

SIDEWALK RAMP TYPE 2
N.T.S.



NOTES:
1. TO BE USED WHERE SIDEWALK OCCUPIES ENTIRE AREA BETWEEN CURB AND PROPERTY LINE.
2. LANDING AREA MAY BE PROVIDED EITHER SIDE
1:12 SLOPES ON FLARES MUST BE MAINTAINED.

SIDEWALK RAMP TYPE 3
N.T.S.



CITY OF JUNCTION CITY, KANSAS	
SIDEWALK AND ADA RAMP DETAILS	
MUNICIPAL SERVICES DIRECTOR GREGORY S. McCAFFERY, P.E.	DATE: 10/08/2013
ENGINEERING DEPARTMENT 700 N JEFFERSON JUNCTION CITY, KS 66441 (785) 238-3103	DESIGN: _____ DRAWN: _____
SHEET 1 OF 1	