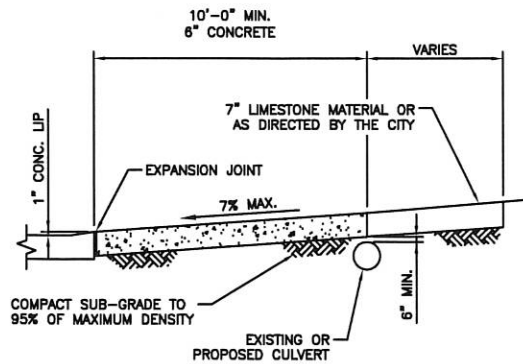
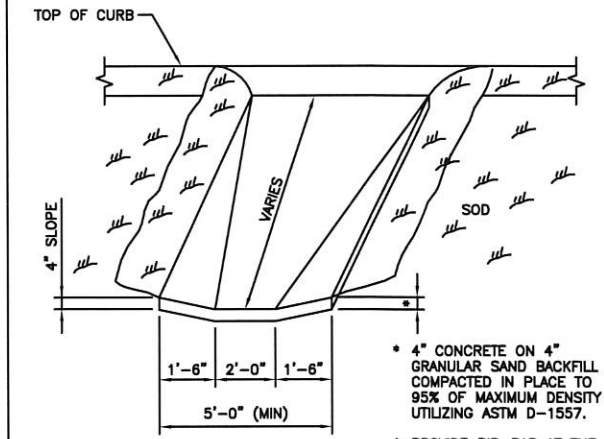


RESIDENTIAL DRIVEWAY
N.T.S.

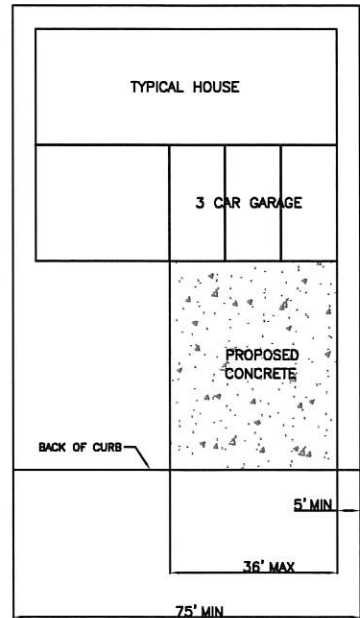


STREET CUT RESTORATION
(ASPHALT OR CONCRETE)
N.T.S.

- NOTES:
- ROCK BACKFILL SHALL BE 3/4" CRUSHED STONE OR KDOT AB3.
 - CONCRETE: F_c = 3500 PSI, AIR-ENTRAINED.
 - ASPHALTIC CONCRETE SURFACE SHALL BE PER CITY ENGINEERING DESIGN STANDARDS.

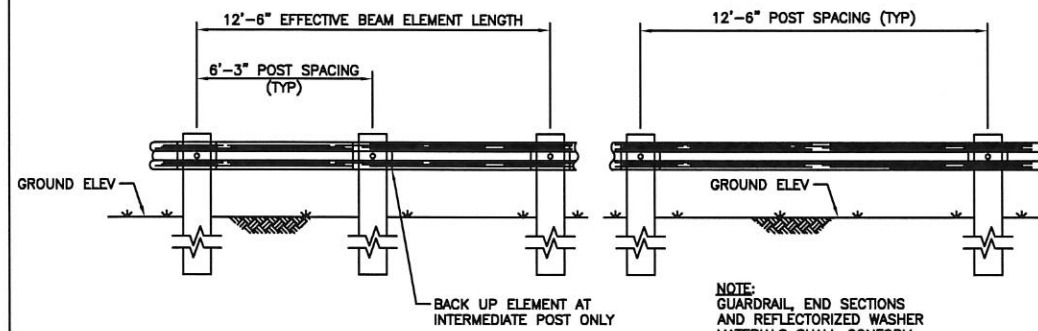


CONCRETE SPILLWAY
N.T.S.

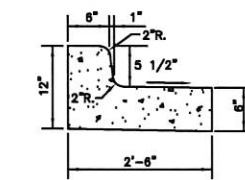
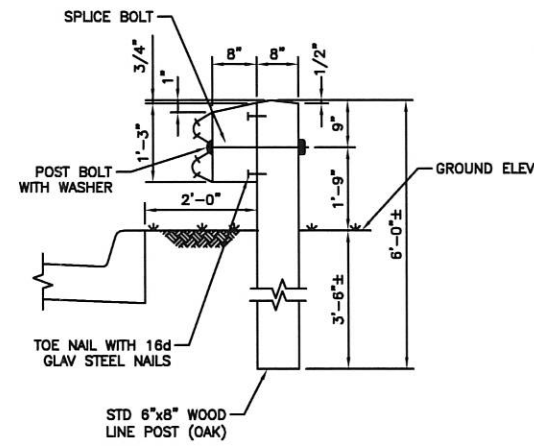


RESIDENTIAL DRIVEWAY
N.T.S.

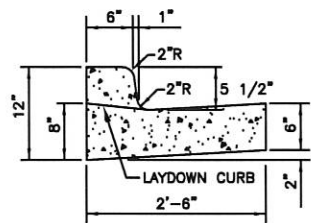
- NOTES:
- MINIMUM LOT WIDTH 75'
 - WITH FRONT FACING 3 CAR GARAGE OR CARPORT
 - CUL-DE-SAC LOTS SHALL HAVE 5' INTERIOR LOT SEPARATION



BEAM GUARDRAIL - TYPE "B"
N.T.S.

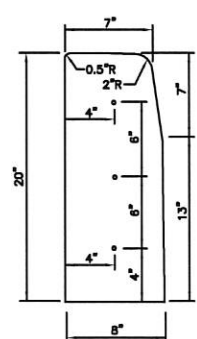


CONCRETE CURB & GUTTER WITH REVERSE FLOW IN GUTTER
N.T.S.

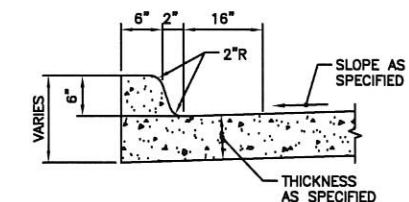


CONCRETE CURB & GUTTER
N.T.S.

ALL WHEEL CHAIR RAMPS, ALLEY ENTRANCES AND DRIVEWAYS TO HAVE LAYDOWN CURBS AS SHOWN, SEE SIDEWALK AND DRIVEWAY DETAILS FOR VARIATIONS.

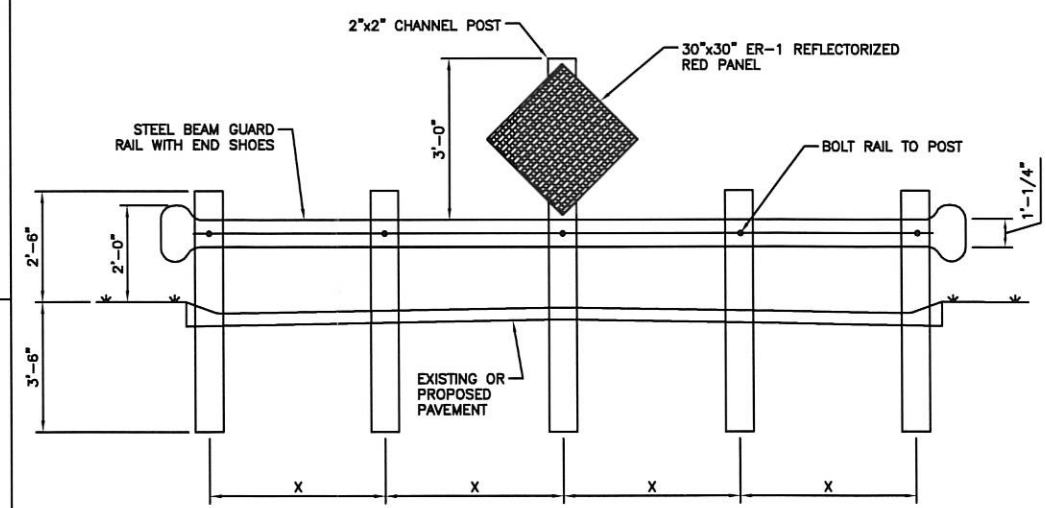


STRAIGHT CURB
N.T.S.



INTEGRAL CONCRETE CURB & GUTTER
N.T.S.

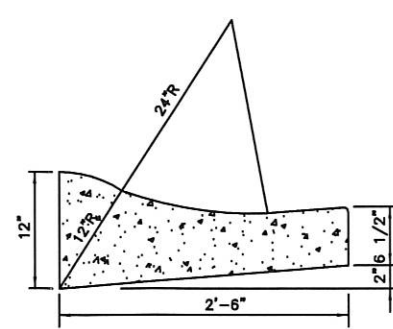
ALL WHEEL CHAIR RAMPS, ALLEY ENTRANCES AND DRIVEWAYS TO HAVE LAYDOWN CURBS AS SHOWN, SEE SIDEWALK AND DRIVEWAY DETAILS FOR VARIATIONS.



- NOTES:
- STEEL W6x9 x 6'-0" MAY REPLACE OAK POST.
 - CHANNEL TO BE BOLTED TO OAK POSTS.
 - GUARD RAIL & FITTINGS TO CONFORM TO KDOT STANDARDS.

WIDTH OF PAVEMENT	X	NO. OF POSTS
31' B/B	6'-0"	5
ALL OTHERS B/B	5'-6"	7

ROAD END STEEL BEAM GUARD RAIL
N.T.S.



MOUNTABLE CONCRETE CURB & GUTTER
N.T.S.

Rev	Date	Description
1	7/15/2014	Add 3 car garage Residential driveway



CITY OF JUNCTION CITY, KANSAS

DRIVEWAY AND GENERAL DETAILS

MUNICIPAL SERVICES DIRECTOR
GREGORY S. McCAFFERY, P.E.

DATE:
7/15/2014

ENGINEERING DEPARTMENT
700 N JEFFERSON
JUNCTION CITY, KS 66441
(785) 238-3103

DESIGN: -
DRAWN: B.Brown

SHEET 1 OF 1