

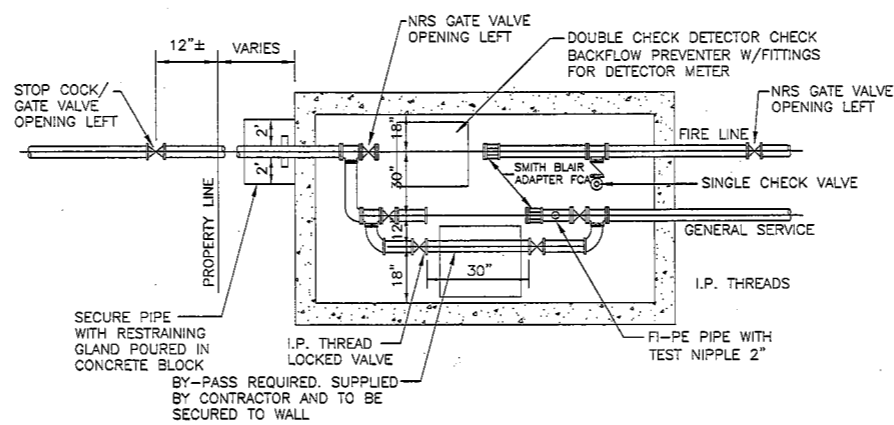
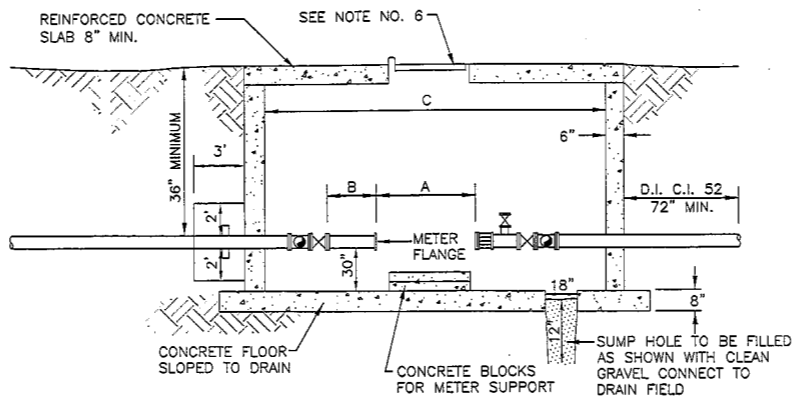
GENERAL RULES:

- METER VAULT WALLS TO BE POURED CONCRETE, CONCRETE BLOCK OR PRECAST CONCRETE.
- METER VAULT ROOF TO BE REINFORCED CONCRETE.
- METER VAULT TO BE LOCATED, WHEN POSSIBLE, OUTSIDE TRAFFIC AREA AND WHERE SURFACE WATER WILL NOT DRAIN INTO IT. VAULT MUST BE KEPT FREE OF WATER.
- DUCTILE IRON CLASS 52 OR C900 THROUGH VAULT.
- FLANGED VALVES ON EACH SIDE OF METER MUST BE ADEQUATELY SECURED TO WITHSTAND WATER THRUST WITH METER REMOVED.
- NON-TRAFFIC: BILCO "K-1" SINGLE LEAF ALUMINUM OR APPROVED EQUAL. IN TRAFFIC: EUJW 1040 TYPE F OR APPROVED EQUAL APPROVED BY THE CITY ENGINEER.
- CONCRETE FLOOR REQUIRED. SLOPE TO DRAIN.
- ALL FITTINGS ARE TO BE FLANGED (TEES, BENDS, ETC.) BEYOND VALVES.

| METER SIZE | A | B | C | D | BY-PASS (*) |
|------------|---------|-----|------|-----|-------------|
| 3" | 18-3/4" | 24" | 140" | 48" | 1-1/2" |
| 4" | 22-1/4" | 33" | 157" | 72" | 2" |
| 6" | 27-3/4" | 41" | 191" | 72" | 3" |

(*) IF HIGH CONTINUOUS RATE OF FLOW IS REQUIRED, A LARGER BY-PASS MAY BE PERMITTED, BUT NOT LONGER THAN PRIMARY DOMESTIC SERVICE

METER VAULT FOR 3", 4" AND 6" SERVICE LINES
N.T.S.



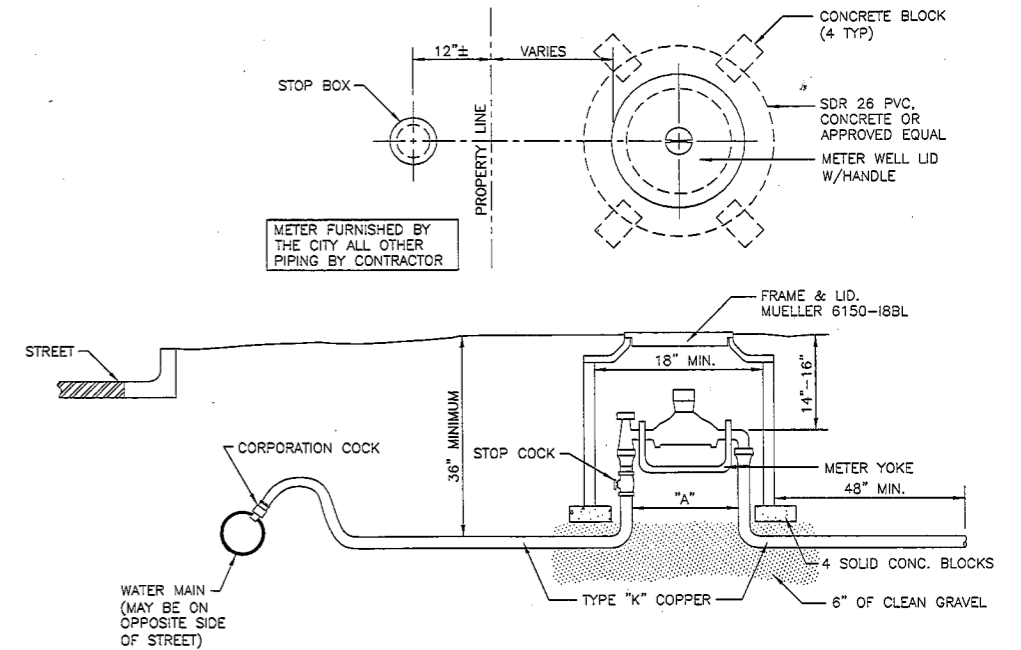
GENERAL RULES:

- METER VAULT WALLS TO BE POURED CONCRETE, CONCRETE BLOCK OR PRECAST CONCRETE.
- METER VAULT ROOF TO BE REINFORCED CONCRETE WITH OPENING CENTERED OVER GENERAL SERVICE METER ON FIRE LINE DETECTOR CHECK VALVE.
- METER VAULT TO BE LOCATED, WHEN POSSIBLE, OUTSIDE TRAFFIC AREA AND WHERE SURFACE WATER WILL NOT DRAIN INTO IT. VAULT MUST BE KEPT FREE OF WATER.
- DUCTILE IRON CLASS 52 OR TYPE "K" COPPER THROUGH VAULT.
- VALVES ON EACH SIDE OF GENERAL SERVICE METER FOR 1-1/2" OR 2" SERVICE TO HAVE SCREW ENDS, I.P. THREADS: FOR 3" AND ABOVE VALVES MUST HAVE FLANGED ENDS, BE IN ALIGNMENT AND BE ADEQUATELY SECURED TO WITHSTAND WATER THRUST WITH METER REMOVED.
- NON-TRAFFIC: BILCO "K-1" SINGLE LEAF ALUMINUM OR APPROVED EQUAL. IN TRAFFIC: EUJW 1040 TYPE F OR APPROVED EQUAL APPROVED BY THE CITY ENGINEER. NON-TRAFFIC METERS ARE PREFERRED.
- ALL FITTINGS ARE TO BE FLANGED (TEES, BENDS, ETC.) BEYOND VALVES.

| GENERAL SERVICE | | FIRELINE | | | | | |
|-----------------|------------------|----------|-----|------|------|------|------|
| SIZE (***) | BY-PASS SIZE (*) | A | B | 10" | 8" | 6" | 4" |
| (**) 1-1/2" | NA | 13" | 12" | 140" | 130" | 130" | 130" |
| (**) 2" | NA | 17" | 16" | 140" | 130" | 130" | 130" |
| 3" | 1-1/2" | 18-3/4" | 24" | 159" | 157" | 156" | 155" |
| 4" | 2" | 22-1/4" | 32" | 174" | 172" | 171" | 170" |
| 6" | 3" | 27-3/4" | 48" | 206" | 204" | 203" | 202" |

- (*) IF HIGH CONTINUOUS RATE OF FLOW IS REQUIRED, A LARGER BY-PASS MAY BE PERMITTED, BUT NOT LONGER THAN PRIMARY DOMESTIC SERVICE
- (**) FORD METER SETTER VVB66 OR VVB77 WITHOUT BY-PASS OR APPROVED EQUAL
- (***) FOR 5/8", 3/4" AND 1" METERS USE FORD YOKE #501, 502 OR 503 OR APPROVED EQUAL. NO BY-PASS REQUIRED.

METER VAULT FOR SPLIT SERVICE LINES
N.T.S.



GENERAL RULES:

- METER PIT TO BE LOCATED OUTSIDE TRAFFIC AREA WHERE SURFACE WATER WILL NOT DRAIN INTO IT.
- ALL FITTINGS TO BE BRASS OR COPPER.
- METER WELL TO BE SET ON 6" GRAVEL BEDDING.

| METER SIZE | DIMENSION "A" | MUELLER |
|------------|---------------|---------|
| 5/8" | 18" | B-2410 |
| 3/4" | 21" | B-2423 |
| 1" | 21" | B-2423 |

METER BOX FOR 3/4", 1", AND 1-1/2" SERVICE LINES
N.T.S.



CITY OF JUNCTION CITY, KANSAS

WATER MAIN INSTALLATION DETAILS

| | |
|--|-----------------------|
| MUNICIPAL SERVICES DIRECTOR GREGORY S. McCAFFERY, P.E. | DATE: 10/08/2013 |
| ENGINEERING DEPARTMENT 700 N JEFFERSON JUNCTION CITY, KS 66441 (785) 238-3103 | DESIGN: - DRAWN: - |

SHEET 2 OF 2