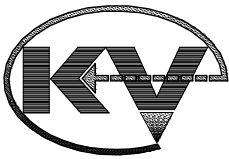
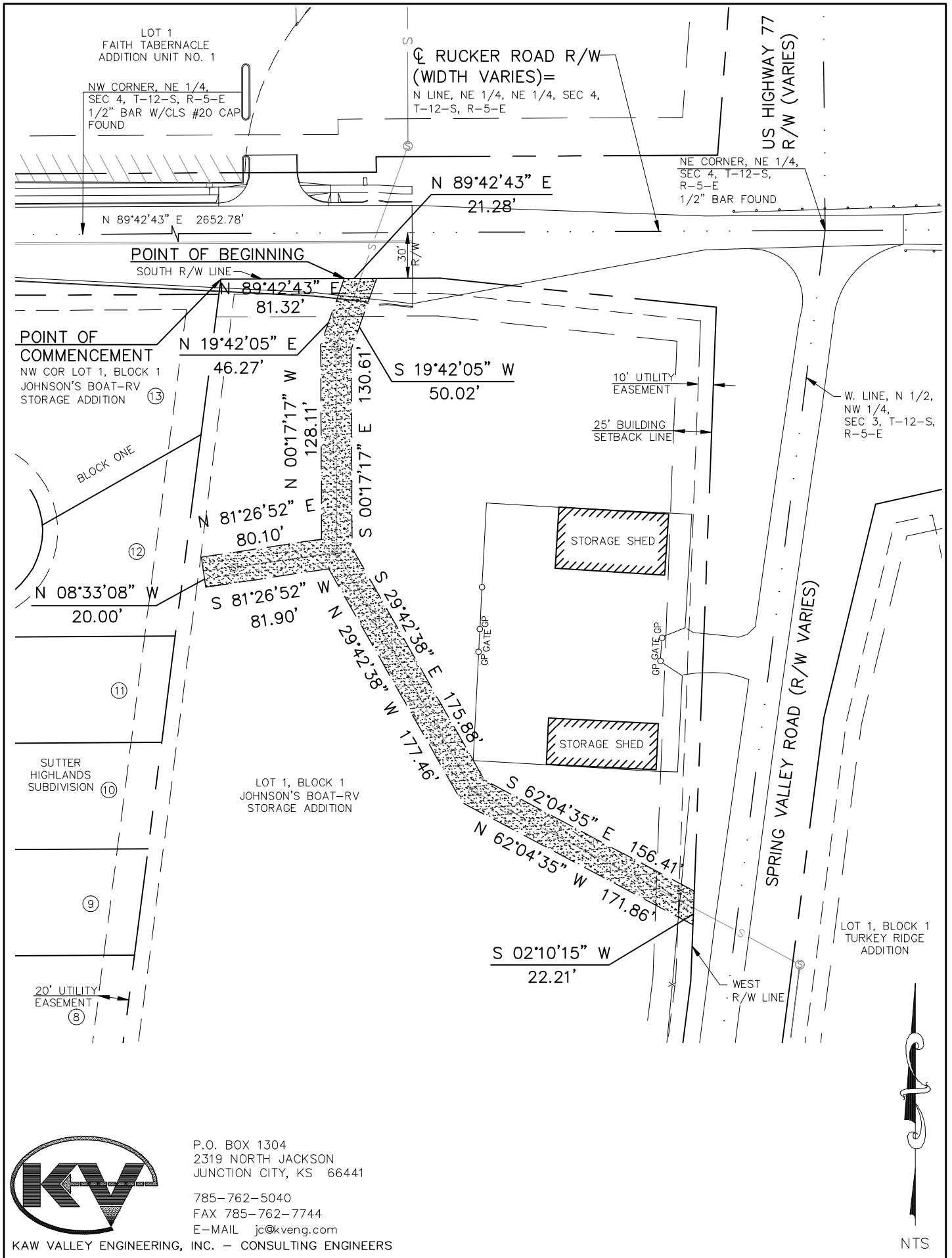


\\JANET10\Dwg\B06\_0983\DESIGN2\EXHIBIT\0983EXBA\_BJOHNSON SAN.dwg, 7/8/2011 1:33:59 PM, Trumpp



P.O. BOX 1304  
 2319 NORTH JACKSON  
 JUNCTION CITY, KS 66441  
 785-762-5040  
 FAX 785-762-7744  
 E-MAIL jc@kveng.com

KAW VALLEY ENGINEERING, INC. - CONSULTING ENGINEERS



NTS