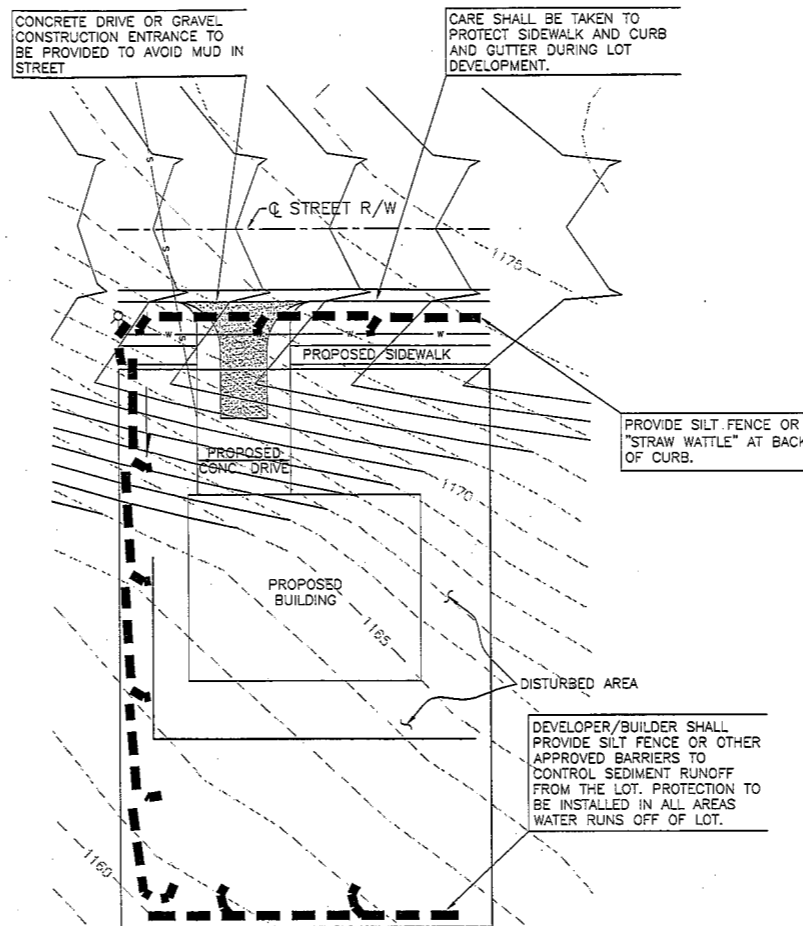


NOTES:

1. THE ENTRANCE SHALL BE MAINTAINED IN A CONDITION THAT WILL PREVENT TRACKING OR FLOWING OF SEDIMENT ONTO PUBLIC RIGHTS-OF-WAY. THIS MAY REQUIRE TOP DRESSING, REPAIR AND/OR CLEANOUT OF ANY MEASURES USED TO TRAP SEDIMENT.
2. AVOID LOCATING ON STEEP SLOPES OR AT CURVES ON PUBLIC ROADS. IF POSSIBLE, LOCATE WHERE PERMANENT ROADS WILL EVENTUALLY BE CONSTRUCTED.
3. INSTALL PIPE UNDER THE ENTRANCE IF NEEDED TO MAINTAIN DRAINAGE DITCHES ALONG PUBLIC ROADS.
4. DIVERT ALL SURFACE RUNOFF AND DRAINAGE FROM THE ENTRANCE TO A SEDIMENT CONTROL DEVICE.
5. STONE SIZE - USE 3" STONE OR RECLAIMED OR RECYCLED EQUIVALENT.
6. LENGTH - AS REQUIRED, BUT NOT LESS THAN 50 FEET.
7. THICKNESS - NOT LESS THAN 6".
8. WIDTH - TWENTY (20) FOOT MINIMUM, BUT NOT LESS THAN THE FULL WIDTH AT POINTS WHERE INGRESS OCCURS.
9. FILTER CLOTH - WILL BE PLACED OVER THE ENTIRE AREA PRIOR TO PLACING OF STONE.
10. SURFACE WATER - ALL SURFACE WATER FLOWING OR DIVERTED TOWARD CONSTRUCTION ENTRANCES SHALL BE PIPED ACROSS THE ENTRANCE. IF PIPING IS IMPRACTICAL, A MOUNTABLE BERM WITH 3:1 SLOPES WILL BE PERMITTED.
11. MAINTENANCE - THE ENTRANCE SHALL BE MAINTAINED IN A CONDITION WHICH WILL PREVENT TRACKING OR FLOWING OF SEDIMENT ONTO PUBLIC RIGHTS-OF-WAY. THIS MAY REQUIRE PERIODIC TOP DRESSING WITH ADDITIONAL STONE AS CONDITIONS DEMAND AND REPAIR AND/OR CLEANOUT OF ANY MEASURES USED TO TRAP SEDIMENT. ALL SEDIMENT SPILLED, DROPPED, WASHED OR TRACKED ONTO PUBLIC RIGHTS-OF-WAY MUST BE REMOVED IMMEDIATELY.
12. PERIODIC INSPECTION AND MAINTENANCE SHALL BE PROVIDED AS NEEDED AFTER EACH RAIN.

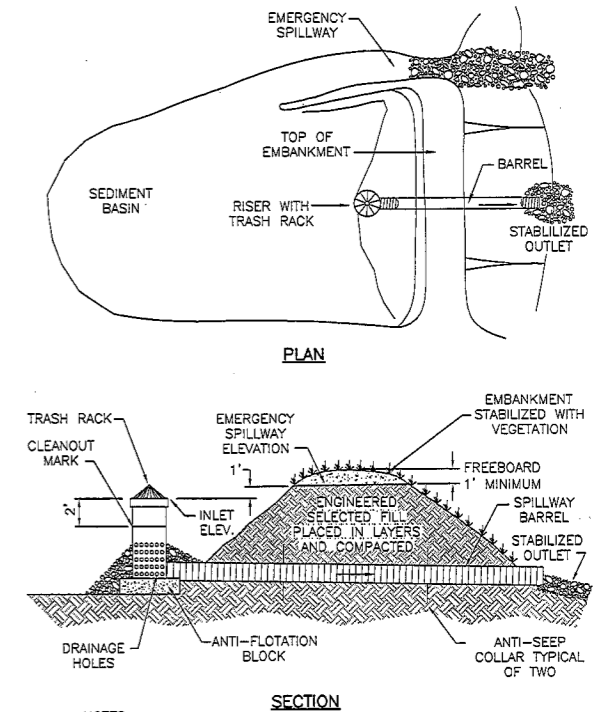
STABILIZED CONSTRUCTION ENTRANCE
N.T.S.



NOTES:

1. NO SILT, MUD OR DEBRIS TO BE ALLOWED IN STREET. STREETS TO BE MAINTAINED IN A CLEAN CONDITION DAILY AND AFTER RAIN EVENTS.
2. EROSION AND SEDIMENT PROTECTION TO REMAIN IN PLACE UNTIL TURF IS ESTABLISHED ON LOT.

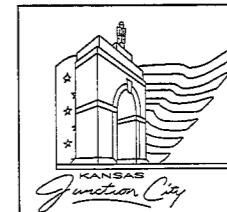
LOT DEVELOPMENT
(BY OTHERS AT TIME OF HOUSE CONSTRUCTION)
N.T.S.



NOTES:

1. THE TEMPORARY SEDIMENT BASIN, DESIGNED BY A QUALIFIED PROFESSIONAL, IS REQUIRED FOR DISTURBED AREAS GREATER THAN 10 ACRES WITHIN A DRAINAGE AREA LESS THAN 50 ACRES.
2. THE SEDIMENT BASIN WILL BE REMOVED WITHIN THREE YEARS.

TYPICAL SEDIMENT BASIN
N.T.S.



CITY OF JUNCTION CITY, KANSAS			
SOIL EROSION AND SEDIMENTATION CONTROL DETAILS			
MUNICIPAL SERVICES DIRECTOR GREGORY S. McCAFFERY, P.E.		DATE: 10/08/2013	
ENGINEERING DEPARTMENT 700 N JEFFERSON JUNCTION CITY, KS 66441 (785) 238-3103		DESIGN: -	DRAWN: -
SHEET 2 OF 2			