

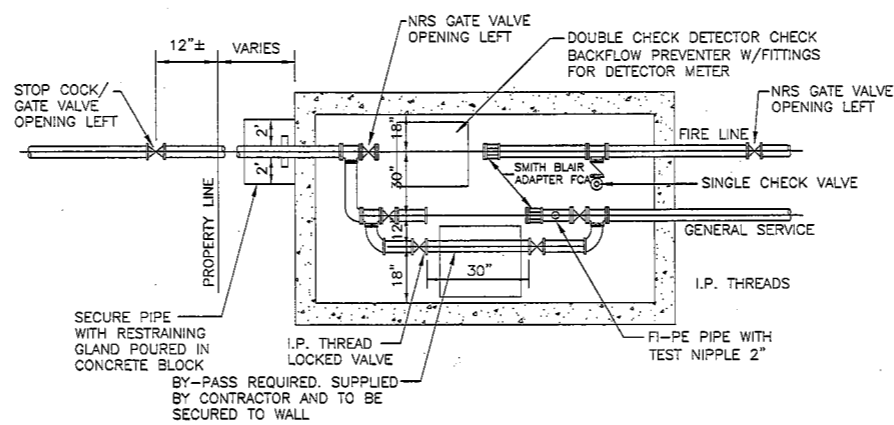
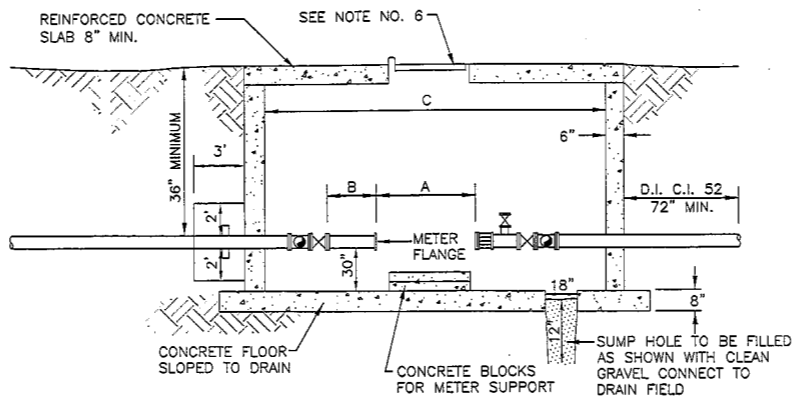
GENERAL RULES:

- METER VAULT WALLS TO BE POURED CONCRETE, CONCRETE BLOCK OR PRECAST CONCRETE.
- METER VAULT ROOF TO BE REINFORCED CONCRETE.
- METER VAULT TO BE LOCATED, WHEN POSSIBLE, OUTSIDE TRAFFIC AREA AND WHERE SURFACE WATER WILL NOT DRAIN INTO IT. VAULT MUST BE KEPT FREE OF WATER.
- DUCTILE IRON CLASS 52 OR C900 THROUGH VAULT.
- FLANGED VALVES ON EACH SIDE OF METER MUST BE ADEQUATELY SECURED TO WITHSTAND WATER THRUST WITH METER REMOVED.
- NON-TRAFFIC: BILCO "K-1" SINGLE LEAF ALUMINUM OR APPROVED EQUAL. IN TRAFFIC: EUJW 1040 TYPE F OR APPROVED EQUAL APPROVED BY THE CITY ENGINEER.
- CONCRETE FLOOR REQUIRED. SLOPE TO DRAIN.
- ALL FITTINGS ARE TO BE FLANGED (TEES, BENDS, ETC.) BEYOND VALVES.

METER SIZE	A	B	C	D	BY-PASS (*)
3"	18-3/4"	24"	140"	48"	1-1/2"
4"	22-1/4"	33"	157"	72"	2"
6"	27-3/4"	41"	191"	72"	3"

(*) IF HIGH CONTINUOUS RATE OF FLOW IS REQUIRED, A LARGER BY-PASS MAY BE PERMITTED, BUT NOT LONGER THAN PRIMARY DOMESTIC SERVICE

METER VAULT FOR 3", 4" AND 6" SERVICE LINES
N.T.S.



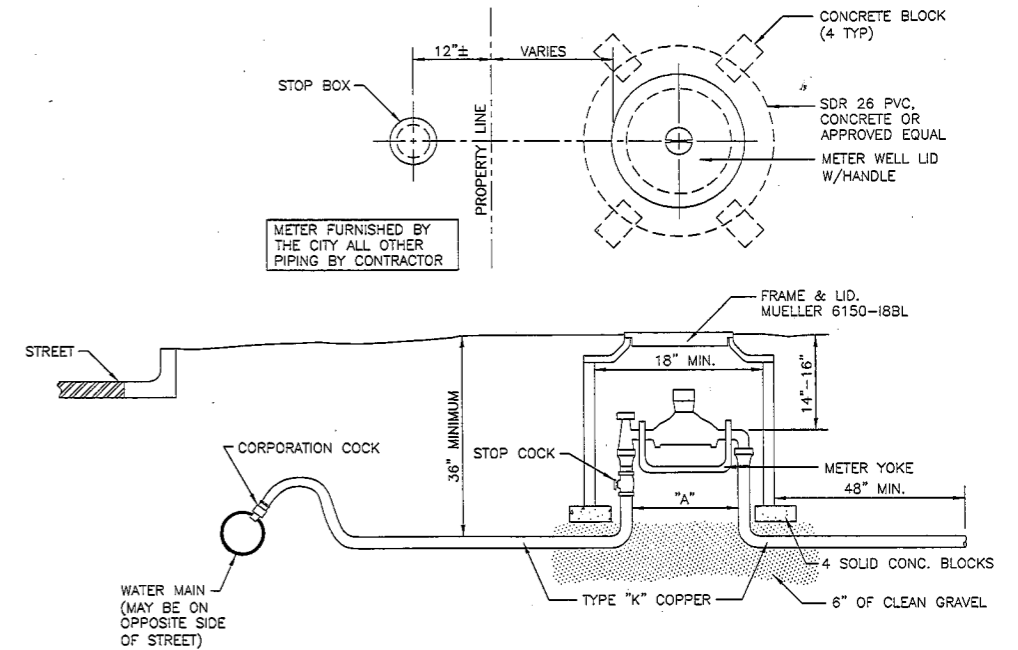
GENERAL RULES:

- METER VAULT WALLS TO BE POURED CONCRETE, CONCRETE BLOCK OR PRECAST CONCRETE.
- METER VAULT ROOF TO BE REINFORCED CONCRETE WITH OPENING CENTERED OVER GENERAL SERVICE METER ON FIRE LINE DETECTOR CHECK VALVE.
- METER VAULT TO BE LOCATED, WHEN POSSIBLE, OUTSIDE TRAFFIC AREA AND WHERE SURFACE WATER WILL NOT DRAIN INTO IT. VAULT MUST BE KEPT FREE OF WATER.
- DUCTILE IRON CLASS 52 OR TYPE "K" COPPER THROUGH VAULT.
- VALVES ON EACH SIDE OF GENERAL SERVICE METER FOR 1-1/2" OR 2" SERVICE TO HAVE SCREW ENDS, I.P. THREADS: FOR 3" AND ABOVE VALVES MUST HAVE FLANGED ENDS, BE IN ALIGNMENT AND BE ADEQUATELY SECURED TO WITHSTAND WATER THRUST WITH METER REMOVED.
- NON-TRAFFIC: BILCO "K-1" SINGLE LEAF ALUMINUM OR APPROVED EQUAL. IN TRAFFIC: EUJW 1040 TYPE F OR APPROVED EQUAL APPROVED BY THE CITY ENGINEER. NON-TRAFFIC METERS ARE PREFERRED.
- ALL FITTINGS ARE TO BE FLANGED (TEES, BENDS, ETC.) BEYOND VALVES.

GENERAL SERVICE		FIRELINE					
SIZE (***)	BY-PASS SIZE (*)	A	B	10"	8"	6"	4"
(**) 1-1/2"	NA	13"	12"	140"	130"	130"	130"
(**) 2"	NA	17"	16"	140"	130"	130"	130"
3"	1-1/2"	18-3/4"	24"	159"	157"	156"	155"
4"	2"	22-1/4"	32"	174"	172"	171"	170"
6"	3"	27-3/4"	48"	206"	204"	203"	202"

- (*) IF HIGH CONTINUOUS RATE OF FLOW IS REQUIRED, A LARGER BY-PASS MAY BE PERMITTED, BUT NOT LONGER THAN PRIMARY DOMESTIC SERVICE
- (**) FORD METER SETTER VVB66 OR VVB77 WITHOUT BY-PASS OR APPROVED EQUAL
- (***) FOR 5/8", 3/4" AND 1" METERS USE FORD YOKE #501, 502 OR 503 OR APPROVED EQUAL. NO BY-PASS REQUIRED.

METER VAULT FOR SPLIT SERVICE LINES
N.T.S.



GENERAL RULES:

- METER PIT TO BE LOCATED OUTSIDE TRAFFIC AREA WHERE SURFACE WATER WILL NOT DRAIN INTO IT.
- ALL FITTINGS TO BE BRASS OR COPPER.
- METER WELL TO BE SET ON 6" GRAVEL BEDDING.

METER SIZE	DIMENSION "A"	MUELLER
5/8"	18"	B-2410
3/4"	21"	B-2423
1"	21"	B-2423

METER BOX FOR 3/4", 1", AND 1-1/2" SERVICE LINES
N.T.S.



CITY OF JUNCTION CITY, KANSAS

WATER MAIN INSTALLATION DETAILS

MUNICIPAL SERVICES DIRECTOR GREGORY S. McCAFFERY, P.E.	DATE: 10/08/2013
ENGINEERING DEPARTMENT 700 N JEFFERSON JUNCTION CITY, KS 66441 (785) 238-3103	DESIGN: - DRAWN: -

SHEET 2 OF 2