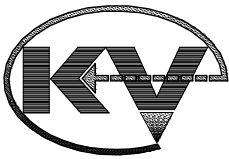
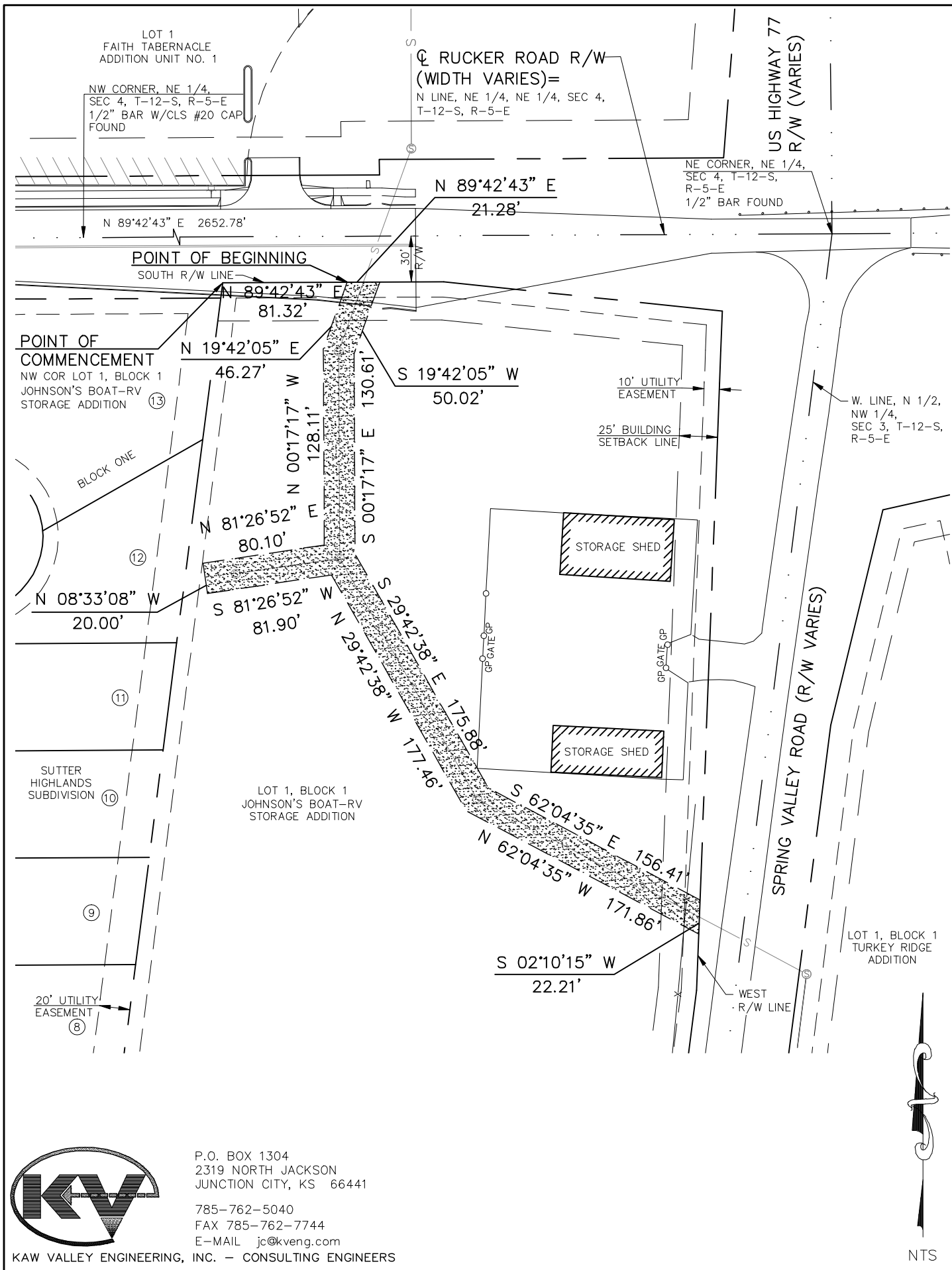


\\JANET10\Dwg\B06_0983\DESIGN2\EXHIBIT\0983EXBA_BJOHNSON SAN.dwg, 7/8/2011 1:33:59 PM, Trumpp



P.O. BOX 1304
 2319 NORTH JACKSON
 JUNCTION CITY, KS 66441
 785-762-5040
 FAX 785-762-7744
 E-MAIL jc@kveng.com
 KAW VALLEY ENGINEERING, INC. - CONSULTING ENGINEERS



NTS